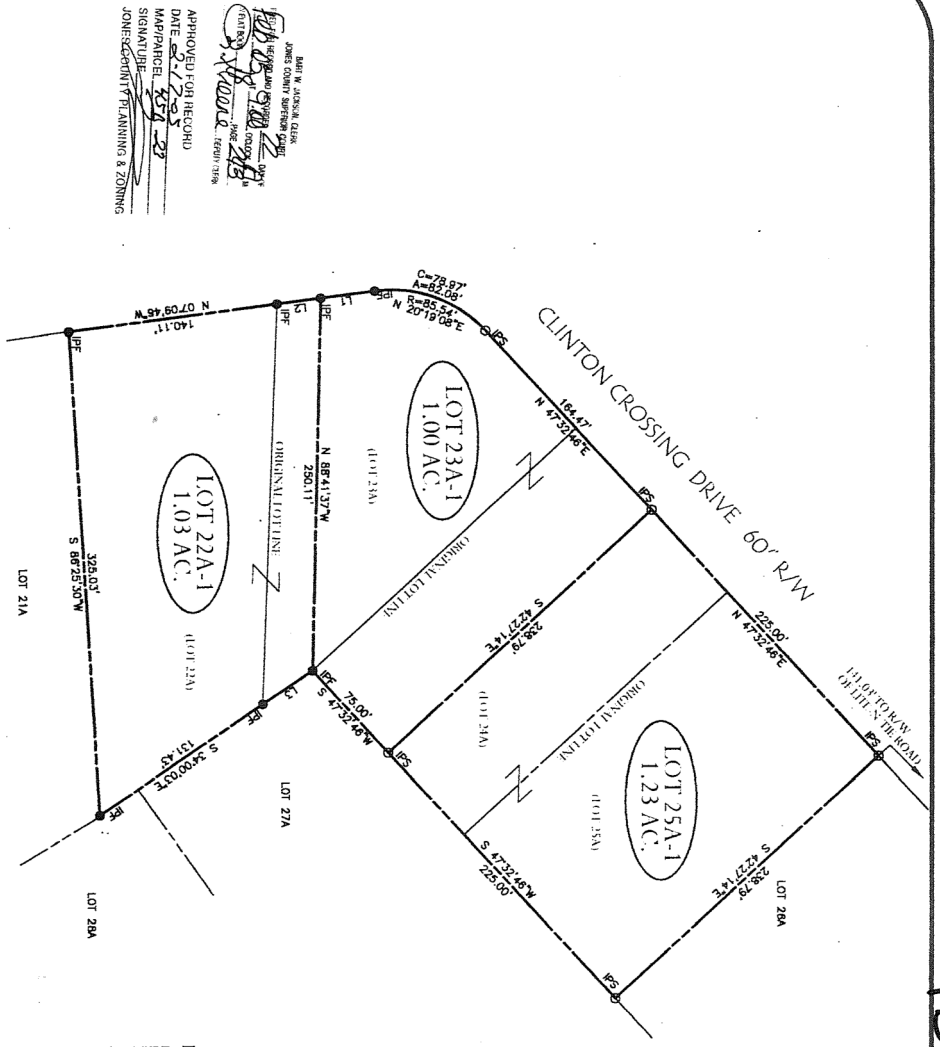


LINE	BEARING	DISTANCE
L1	N 07°13'40"W	26.32'
L2	N 07°13'51"W	26.52'
L3	N 33°26'37"W	40.00'

NOTE:
PART OF LOT 23A TO BE ADDED TO LOT 25A
TO FORM ONE LOT. PART OF LOT 24A TO BE
ADDED TO LOT 23A TO FORM ANOTHER
LOT. REMAINING PART OF LOT 23A
TO REMAIN ONE LOT.

REFERENCES:
PLAT BOOK 154/102
PLAT BY COLLINS & COMPANY,
DATED APRIL 1, 1889
PLAT BY COLLINS & COMPANY,
DATED FEBRUARY 4, 1889
T.M. MAP 43

LEGEND:
● IRON PIN FOUND (REAR)
○ IRON PIN TO BE SET (1/2" REAR)



APPROVED FOR RECORD
DATE 02-27-2005
MAPPER/RECORDED
SIGNATURE [Signature]
JONES COUNTY PLANNING & ZONING

MART W. ANDERSON, CLERK
JONES COUNTY SUPERVISOR
DATE 02-27-2005
SIGNATURE [Signature]
JONES COUNTY CLERK

THE FIELD DATA UPON WHICH THIS MAP OR PLAT IS
BASED HAS A CLUSTER PRECISION OF ONE FOOT
IN 2,189.6 FEET, AND AN ANGULAR ERROR OF NOT
LESS THAN ONE SECOND. THE METHOD USED IN
THE SURVEY WAS THE TRIANGULAR METHOD.
THIS MAP OR PLAT HAS BEEN CALCULATED FOR
CLOSED POLYONS AND IS NOT TO BE ACCURATE WITHIN
ONE FOOT IN 2,189.6 FEET. THE MEASUREMENTS WHICH
ON THIS PLAT WERE OBTAINED BY USING A
TOLKON G.I.S. 200 SERIES TOTAL STATION.

RESUBDIVISION SURVEY
FOR
DREAM HOME
CUSTOM DESIGN, INC.
LANDLOT 5, 9TH LAND DISTRICT
JONES COUNTY, GEORGIA
SCALE: 1" = 80', FEBRUARY 1, 2005

MVA
1800 COUNTRY ACCORDITION

MCDUGGALL & ASSOCIATES, LLC
LAND SURVEYING, CIVIL DESIGN, PLANNING & ENVIRONMENTAL
1460 BIRCH WINDIE, MCDONALD COUNTY, MISSOURI 64501-4001

